

Why are we proposing the changes?

- To improve short term parking for visitors to the local shops and residential and business properties
- To improve loading availability for deliveries to businesses
- To reduce congestion caused by lack of existing loading facilities

We want your views

The consultation will be analysed according to comments made, not purely on 'Yes/No' responses. Interested parties from outside the immediate area will also be free to make representations.

We hope you will take the time to give us your views, as the decision on whether or not to proceed with the scheme will be based on the feedback we receive at this stage.

Please consider our proposals and make any comments and suggestions by **30 October 2009**, by emailing parkingreview@southwark.gov.uk or by writing to, FREEPOST RRAH-BSJR-BJLS Southwark Council, Public Realm Division, Network development, PO Box 64529, London SE1 5LX. (No Stamp Required)



Bermondsey (G) Controlled Parking Zone (CPZ) Review Queen Elizabeth Street

What happens next?

As you will appreciate Southwark Council receives many comments from consultations and therefore we are unable to respond personally to each returned document. However all comments and suggestions will be taken into consideration before a decision is made.

A decision on whether to progress with the proposals at this location will be made by Bermondsey community council on **8 December 2009**.

Subject to approval, implementation should take place in early 2010.

For further information on controlled parking zones and to view a map of the Bermondsey (G) CPZ, please visit www.southwark.gov.uk/parking

To arrange a translation of this leaflet and the other consultation documents, or for other assistance, please take it to:

**One Stop Shop – 122 Peckham Hill Street, London SE15, or
One Stop Shop – 151 Walworth Road, London SE17, or
One Stop Shop – 17 Spa Road, London SE16, or
Southwark Town Hall – Peckham Road, London SE5.**

للترييب لترجمة هذه الكراسية خذها رجاء إلى أحد العنوانين التاليين:

Para obtener una traducción de este folleto, llévelo a:

Bu broşürün tercüme edilmesini düzenlemek için lütfen onu aşağıdaki yerlerden birine götürün:

Để có bản dịch tiếng Việt, hãy mang tờ rơi này đến cửa hàng:

Pour une traduction de ce dépliant, présentez-le à l'un des guichets uniques suivants :

এই প্রচারপুস্তিকাটির (লিফলেটের) একটি অনুবাদের আয়োজন করতে হলে দয়া করে এটি এখানে নিয়ে যান:

為獲取此單張的翻譯版本，請將單張帶到以下一站式辦事處：

Review of the Bermondsey, (G) Controlled Parking Zone

Southwark Council periodically reviews each of its Controlled Parking Zones (CPZs) to investigate concerns and comments that have been raised by residents, businesses and stakeholders.

We are currently carrying out a review in some areas of your CPZ and need your views to ensure the parking controls are working and meeting your needs.

Background

CPZ G was introduced in 1998, operating Monday to Friday, 8.30am – 6.30pm. Its last review in 2003 resulted in the boundary of the zone being amended to reflect the introduction of the central London congestion charging zone.

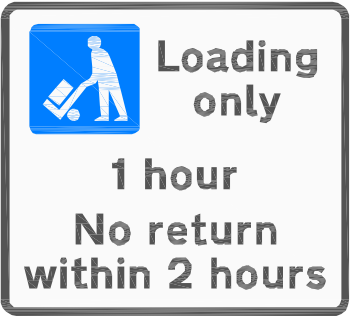
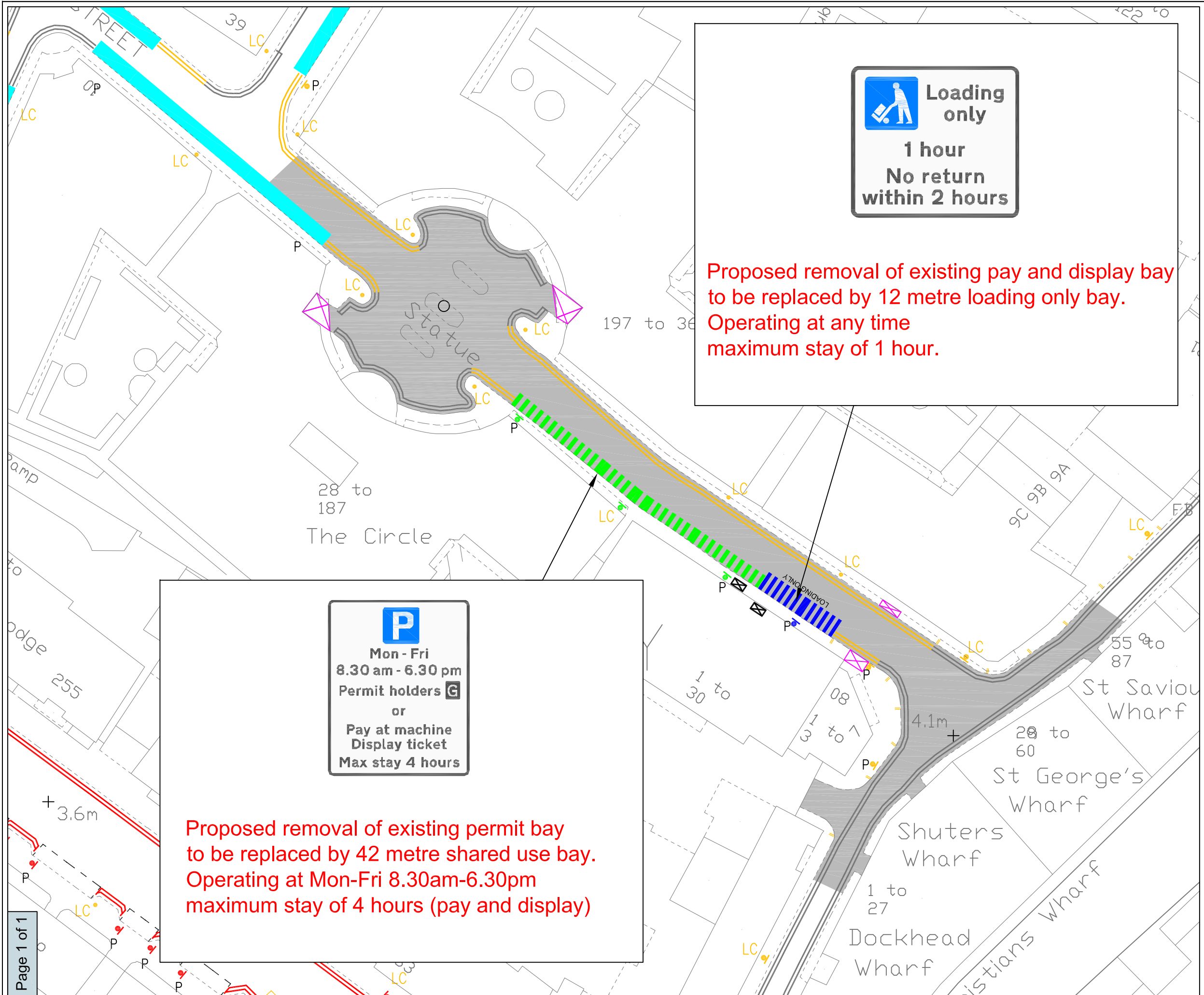
What are the proposed changes?

The network development team are consulting areas within the zone where local parking amendments are proposed.

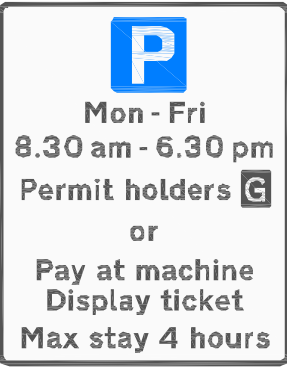
We are writing to you because your address is close to a proposed change to the parking layout in Queen Elizabeth Street. The proposal is

Queen Elizabeth Street

- Change 12m of the pay and display spaces to a loading only bay.
- The loading only bay will operate at any time with a maximum stay period of 1hour, no return for 2 hours
- Change the bay outside Nos.1 to 30 Queen Elizabeth Street from a permit holder bay to a shared use (permit holders or pay and display) bay.
- Extend this shared-use bay by 8m
- The shared use bay will allow permit holders to park without time limit and also allow pay and display ticket holders to park for up to 4 hours, the bay will operate Monday to Friday, 8.30am-6.30pm



Proposed removal of existing pay and display bay to be replaced by 12 metre loading only bay. Operating at any time maximum stay of 1 hour.



Proposed removal of existing permit bay to be replaced by 42 metre shared use bay. Operating at Mon-Fri 8.30am-6.30pm maximum stay of 4 hours (pay and display)

NETWORK DEVELOPMENT



Environment & Housing Dept, Public Realm Division
PO Box 64529, London SE1 5LX

LEGEND

- AAT Waiting Restriction
- Existing Permit Bay
- Proposed Permit Bay
- Proposed Shared use bay
- Proposed Loading only bay
- Existing Motorcycle Bay
- Disabled bay

Revision details	By	Date	Suffix
Design base updated	PG	23/4/09	A
Car Club bay added	PG	5/5/09	B

Project Number
1006_G_ZONE_REVIEW

Title
QUEEN_ELIZABETH_STREET
PROPOSED_LOADING_ONLY_BAY

Layout
INITIAL_DESIGN

Scale
1:500

File Name
1006GENAME/6

Drawn	Designed	Checked	Approved
MH 06/08/09	MH 06/08/09	TW 06/08/09	TW 06/08/09

This map is reproduced from Ordnance Survey material with the permission of the Controller of Her Majesty's Stationery Office © Crown copyright. Unauthorised reproduction infringes Crown copyright and may lead to prosecution or civil proceedings 100019441 [2009].